

PX600-Series

Ultrashort Pulse InnoSlab Lasers

EDGEWAVE

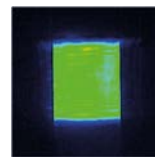
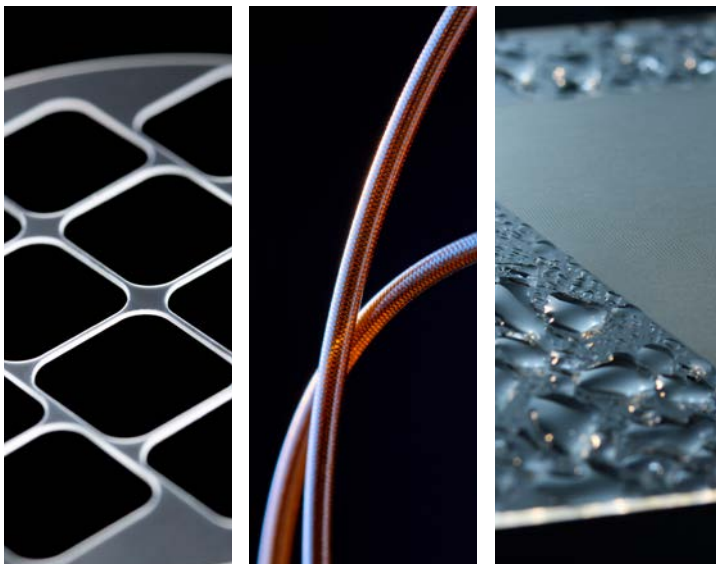


Favourable Applications

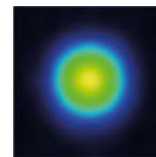
- milling, cutting and drilling of display-glass, sapphire, ceramic, etc.
- ablation and structuring of thin layer
- precision 3D engraving
- milling, drilling and cutting of CFP
- laser induced selective etching
- rapid prototyping

Unique Features

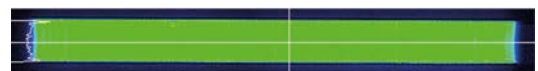
- ultrashort pulse
- high pulse energy
- high peak power
- high repetition rate
- burst mode
- compact setup
- tailored beam profile



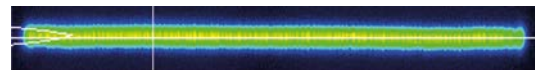
square top-hat



circular gaussian



rectangular top-hat



line shaped top-hat

Overview of PX600-Series

Model	PXxxx-1	PXxxx-2	PXxxx-3	PXxxx-4
Wavelength [nm]	IR	Green	UV	DUV
Highest beam quality M ²	1.1	1.1	1.1	1.1
Max. average power [W]	600	250	120	20
Max. repetition rate [MHz]	100	100	100	100
Max. pulse energy [μJ]	2000	1000	500	250
Pulse width [ps]	12	12	12	12
Energy stability [%] rms	1	2	2	3
Timing stability [ns]	20	20	20	20
Polarisation	> 100:1	> 100:1	> 100:1	> 100:1
Beam ellipticity (far field) [%]	< 10	< 10	< 10	< 10
Diameter at window [mm]	3	3	3	3
Full divergence angle [μrad]	500	250	226	226
Point stability [μrad]	< 50	< 50	< 50	< 50
Warm-up time from cold start [min]	15	20	30	30
Warm-up time from standby [min]	10	15	30	30

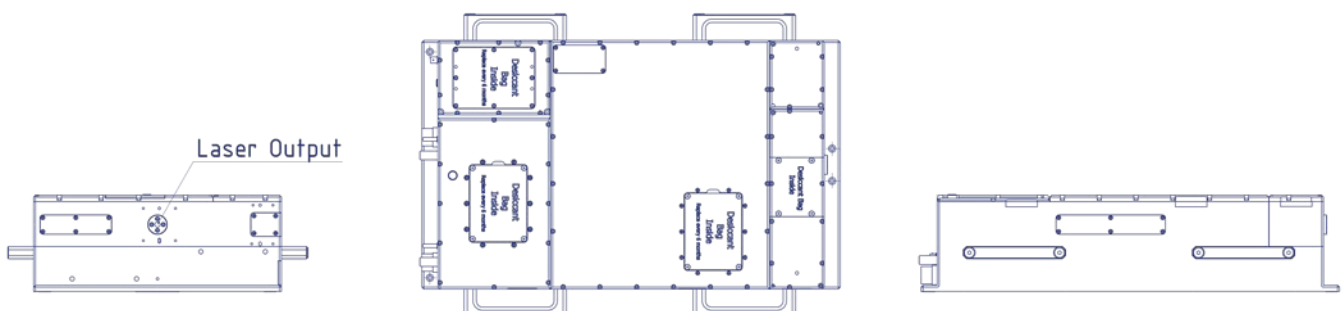
Utility & Ambient Requirements

Power supply	90 V-264 V or 180 V-264 V, 50/60 Hz
Power	3.6 kW-7 kW
Chiller	230, 208, 115, 100 V, 50/60 Hz
Power	1 kW-7 kW
Operation ambient temperature	15 °C-35 °C
Relative humidity, non-condensing	10 %-80 %

Dimensions & Weights

Laser head	650 mm x 385 mm x 150 mm
Supply incl. chiller	19" x (10 HU-15 HU) x 700 mm
Laser head	63 kg
Supply incl. chiller	62 kg-110 kg

EdgeWave follows a policy of continuous product improvement. Specifications are subject to change without notice.



EdgeWave GmbH
Carlo-Schmid-Straße 19
52146 Würselen, Germany

+49 2405 4186 0
info@edge-wave.com

www.edge-wave.com